

## LLE-8 Hydrogen-Deuterium Lamp

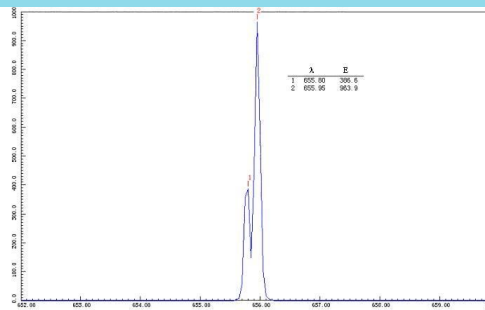
- *Hydrogen-Deuterium spectrum (roughly 3:1 spectral peak ratio)*
- *Affordable price*
- *Complete, including housing, bulb and power supply*



The Hydrogen-Deuterium lamp is a gas discharged light source. It can be used for wavelength calibration and spectral experiments at universities, colleges or research laboratories. The stability and intensity of a Hydrogen-Deuterium lamp exceed those of a Hydrogen arc lamp.

### Specifications

Hydrogen Spectrum (nm)	410.18, 434.05, 486.13, 656.28
Deuterium Spectrum (nm)	410.07, 433.93, 486.01, 656.11
Housing Dimensions	height 220 mm, diameter 50 mm
Windows (2 opposite windows)	18 mm x 40 mm, centered at middle height
Housing Support	base thickness 15 mm, range of height adjustment 100 mm



Hydrogen-Deuterium spectrum at 656 nm