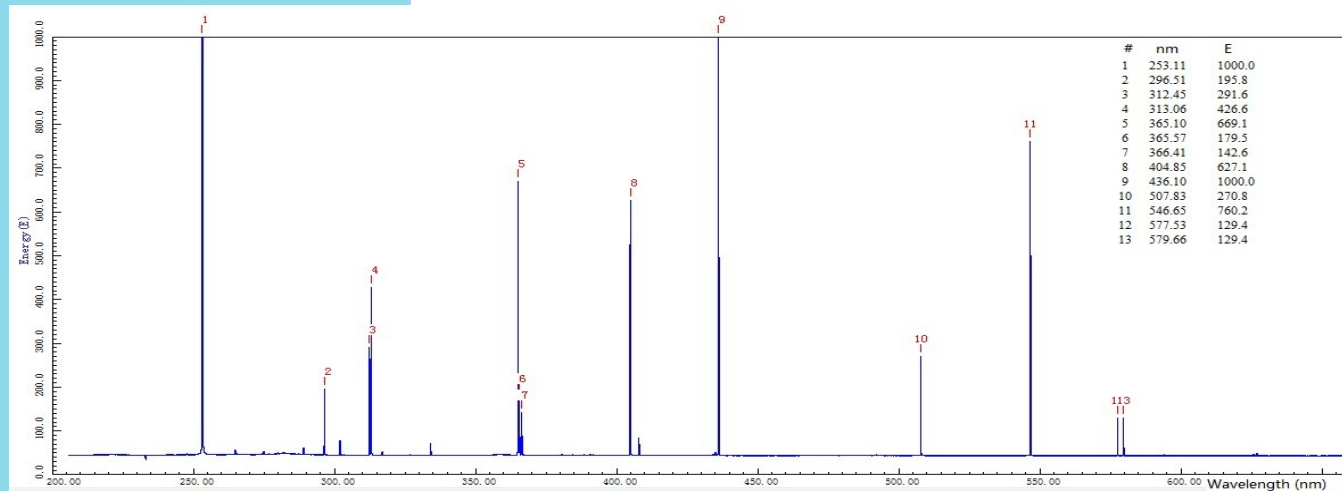


## LLE-4 Pencil Style Mercury Lamp

- Strong and narrow spectral lines in UV and visible range
- Compact, stable, long life and affordable
- Complete set of power supply and lamp



This pencil style mercury lamp is an ideal light source for calibration of spectroscopic instruments. Its UV spectral components can be applied to instruments of biochemical measurement and environmental protection. It is also a source for study of Zeeman effect.



### Specifications

Description	Specifications
Wavelength in UV & Visible	253, 296, 312, 365, 404, 436, 546, 577, 579 (nm)
Rating Voltage	220 V or 110 V
Power	3 W
Operating Voltage	600 V
Operating Current	5 mA
Dimensions of Emitting Area	Length: ~ 40 mm, diameter: ~ 6 mm
Overall Lamp Length	~ 150 mm
Lead Length	~ 1 m

Lambda Scientific Systems, Inc.  
 16300 SW 137th Ave, Unit 132  
 Miami, FL 33177, USA  
 Phone: 305.252.3838 Fax: 305.517.3739  
 E-mail: sales@lambdasys.com  
 Web: www.lambdasys.com

**Note: above product information is subject to change without notice.**