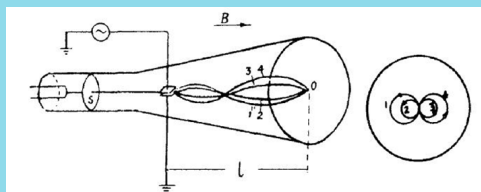
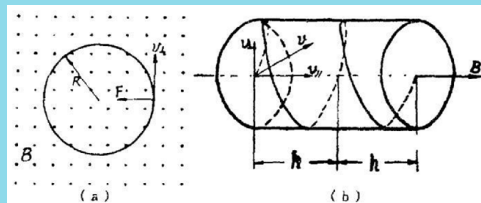


# LEAI-45 Specific Charge of Electron Apparatus - Basic Model

- Complete, compact & stable
- Affordable



This LEAI-45 experimental apparatus is designed to determine the specific charge of an electron, i.e. charge/mass ratio ( $e/m$ ), based on the longitudinal magnetic field focusing method. It is an ideal teaching apparatus for physics laboratories at colleges and universities.

## Specifications

Acceleration voltage	1000 ~ 1200 V, adjustable
Built-in current supply	current range: 0.2 ~ 1.5 A and 1.5 ~ 2.5 A, adjustable and reversible
Coil	3800 turns/meter
Oscilloscope tube	distance between screen to y deflection plate: 0.148 m
Measurement error	< 5%

Lambda Scientific Systems, Inc.  
16300 SW 137th Ave, Unit 132  
Miami, FL 33177, USA  
Phone: 305.252.3838 Fax: 305.517.3739  
E-mail: sales@lambdasys.com  
Web: www.lambdasys.com

**Note: above product information is subject to change without notice.**