

LLE-8 Hydrogen-Deuterium Lamp

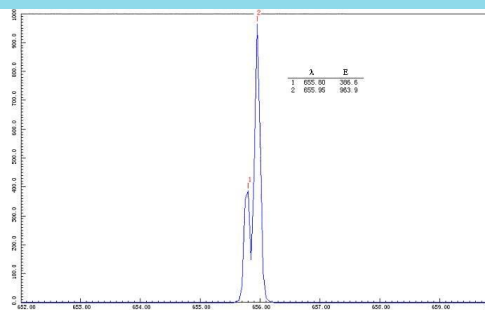
- *Hydrogen-Deuterium spectrum*
- *Affordable price*
- *Complete, including housing, bulb and power supply*



The Hydrogen-Deuterium lamp is a gas discharged light source. It can be used for wavelength calibration and spectral experiments at universities, colleges or research laboratories. The stability and intensity of a Hydrogen-Deuterium lamp exceed those of a Hydrogen arc lamp.

Specifications

Hydrogen Spectrum (nm)	410.18, 434.05, 486.13, 656.28
Deuterium Spectrum (nm)	410.07, 433.93, 486.01, 656.11
Housing Dimension	260 mm x 150 mm x 110 mm
Window Dimension	20 mm x 30 mm, central height 160 mm



Hydrogen-Deuterium spectrum at 656 nm