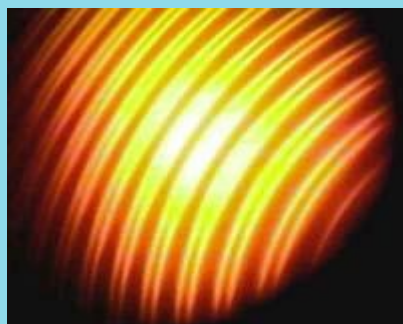
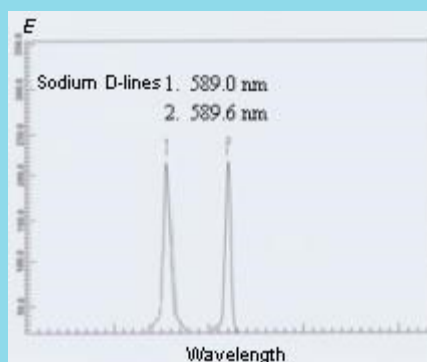


LLE-2 Low Pressure Sodium Lamp

- Compact design
- Complete system including housing, stand, and power supply
- Ground glass & diaphragm supplied
- Output of 20 W



Interference fringes of Sodium D-lines



Spectrum of Sodium lamp



Low Pressure Sodium Vapor Lamp provides light at 589 nm and 589.6 nm, useful for wavelength calibration or resolution regulation. When the lamp is turned on, it initially emits dim pink light to warm the Sodium metal; then it turns into the common bright orange color as the Sodium metal vaporizes. Generally, a low-pressure Sodium lamp requires a warm up period of about ten minutes before it reaches substantially full light output, and has to cool down before restart.

Specifications

Rating Voltage	220/110 V
Power	20 W
Operating Voltage	15 ± 5 VAC
Operating Current	1 ~ 1.3 A
Base's Type	E27
Dimension of Lamp	28 mm in OD, 155 mm in length
Dimension of Housing	50 mm (dia), 195 mm in length
Dimension of Windows	2 windows: 30 mm (height) x 16 mm (width)
Central Height of Windows	Adjustable along post from 150 mm to 260 mm