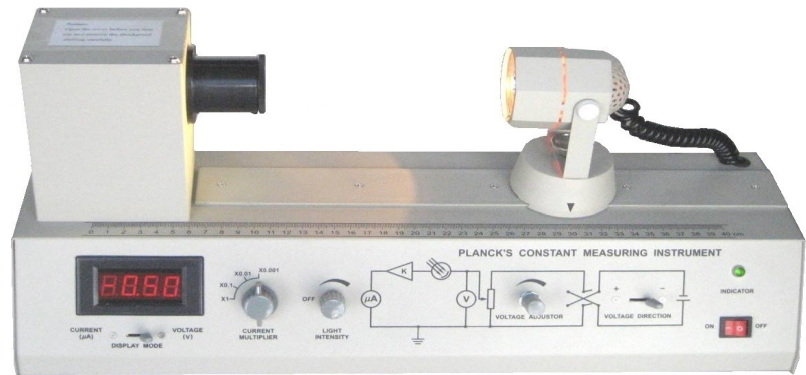
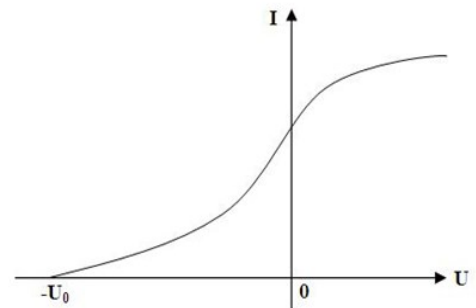
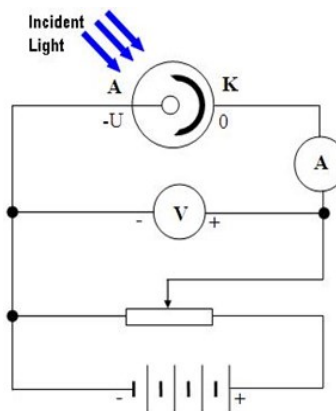


LEAI-50 Apparatus for Determining Planck's Constant- Basic Model



This LEAI-50 Experiment Apparatus of Planck's Constant is used to demonstrate photoelectric effect and calculate Planck's constant according to Einstein's equation of photoelectric effect. It is a cost-effective teaching apparatus for physics laboratories at colleges and universities.

- Complete, compact & stable
- Low dark current
- Affordable



Specifications

Cut-off wavelengths of color filters	635 nm, 570 nm, 540 nm, 500 nm, 460 nm
Light source	12 V/35 W Halogen Tungsten lamp
Sensing component	vacuum phototube
Dark-current	less than 0.003 μA
Precision of accelerating voltage	less than $\pm 2\%$
Measurement error	approximately $\pm 10\%$ as compared with literature value

Lambda Scientific Systems, Inc.
 16300 SW 137th Ave, Unit 132
 Miami, FL 33177, USA
 Phone: 305.252.3838 Fax: 305.517.3739
 E-mail: sales@lambdasys.com
 Web: www.lambdasys.com

Note: above product information is subject to change without notice.